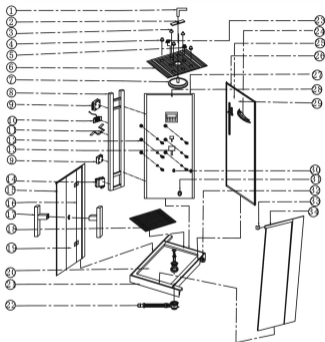


DZ961 Explosive Diagram

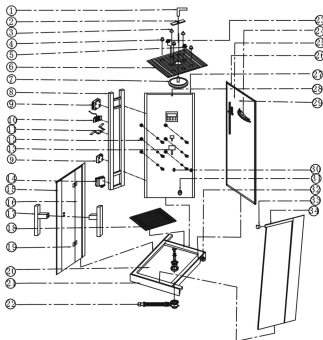


Tools required: Phillips Screwdriver, Adjustable Wrench, Level Bar, 2 Pieces of PSP Tubes, Aluminum Ladder

1. Elbow Bend 2. Pressure Plate 3. Lamp 4. Chromotherapy 5. Speaker 6. Top Cover
7. Ceiling shower 8. Fixed Mount 9. Electric Cabinet 10. Control Panel 11. Fixing Clip
12. Jet 13. Faucet 14. Plastic Steam Generator 15. Movable Door 16. Fixed Door
17. Handle 18. Wooden Floor 19. Hinge 20. Shower Tray 21. Aluminum Skirt
22. Waste 23. Ventilator 24. Shelf 25. Shower Bar 26. Shower Wall
27. Back Panel 28. Temperature Probe 29. Hand shower 30. Cleaning box
31. Steam Outlet 32. Adjusting Leg 33. Elbow 34. Fixed Shower Wall

DZ961 Installation Instructions

Page 1 of 3



Tools required: Phillips Screwdriver, Adjustable Wrench, Level Bar, 2 Pieces of PS Tubes, Aluminum Ladder

1. Elbow Bend 2. Pressure Plate 3. Lamp 4. Chromatherapy 5. Speaker 6. Top Cover
7. Ceiling shower 8. Fixed Mount 9. Electric Cabinet 10. Control Panel 11. Fixing Clip
12. Jet 13. Faucet 14. Plastic Steam Generator 15. Movable Door 16. Fixed Door
17. Handle 18. Wooden Floor 19. Hinge 20. Shower Tray 21. Aluminum Skirt
22. Waste 23. Ventilator 24. Shelf 25. Shower Bar 26. Shower Wall
27. Back Panel 28. Temperature Probe 29. Hand shower 30. Cleaning box
31. Steam Outlet 32. Adjusting Leg 33. Elbow 34. Fixed Shower Wall

Accessories required:

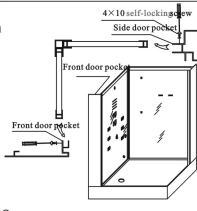
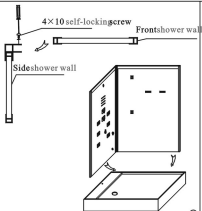
20 4×16 self-locking screws
5 stainless steel fixing clips
4 4×50 self-locking screws
1 5cm hexangular wrench

30 4×10 self-locking screws
10 pieces of tying belts
20 pieces of 4cm spacers
1 3cm hexangular wrench
1 1.5cm hexangular wrench

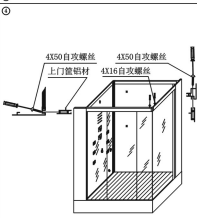
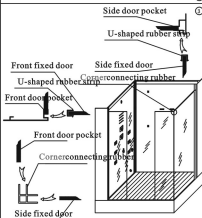
The listed accessories are just for your reference, which will vary from the specific order.

DZ961 Installation Instructions

Page 2 of 3



① ②



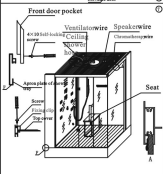
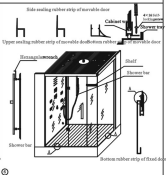
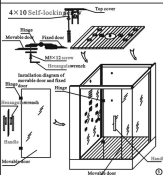
③ ④

Installation Procedure:

1. Put the shower tray on the floor and make it level, then get the side wall and front wall connected and fixed with 4x10 self-locking screws. (Note: If the shower tray is uneven, you can use the adjustable wrench to adjust the legs until it is level as illustrated in drawing 1)
1. Connect the side door pocket and front door pocket with the cabinet walls, and fix with 4x10 self-locking screws. (As illustrated in drawing 2).
1. Put the U-shaped rubber strips onto the side fixed door and front fixed door respectively, then install the two fixed doors onto the front door pocket and side door pocket respectively, and fix with 4x10 self-locking screws. (As illustrated in drawing 3).
1. Put the aluminum profile of upper door frame onto the top of the two fixed doors and connect them with the left door pocket and side door pocket with 4x50 self-locking screws. (As illustrated in drawing 4).

DZ960 Installation Instructions

Page 3 of 3



Installation Procedure:

- Put the top cover on the top of the cabinet and fix with 4x10 self-locking screws, fix the movable door with hinges and properly adjust the movable door, and then install the handle. (Note: If the movable door or fixed door can not be sealed properly or opened or closed smoothly, you can use hexagonal wrench to adjust the movable door and hinges. As illustrated in drawing5)
- Properly install the water retaining rubber strips, magnetic bar, shower bar and shelf, and fix the cabinet wall with the shower tray with 4x16 self-locking screws. (As illustrated in drawing6)
- Connect the water fittings, wires and hoses, fix the front door pocket, apron plate of shower tray and top cover with 4x10 self-locking screws and check whether there is any looseness or omission. (As illustrated in drawing7)